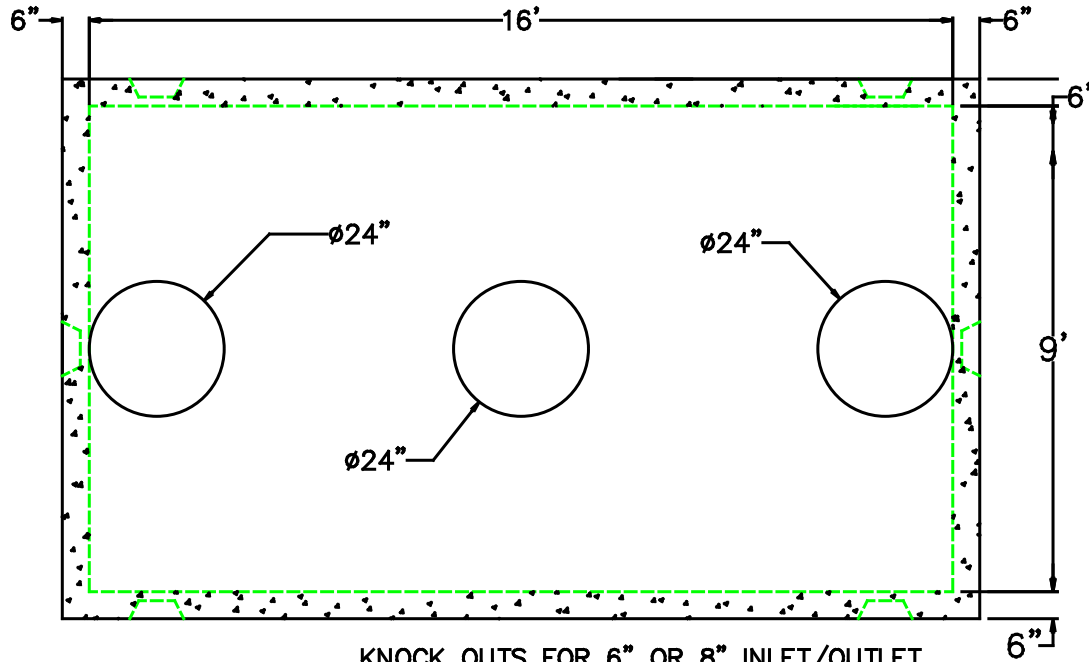


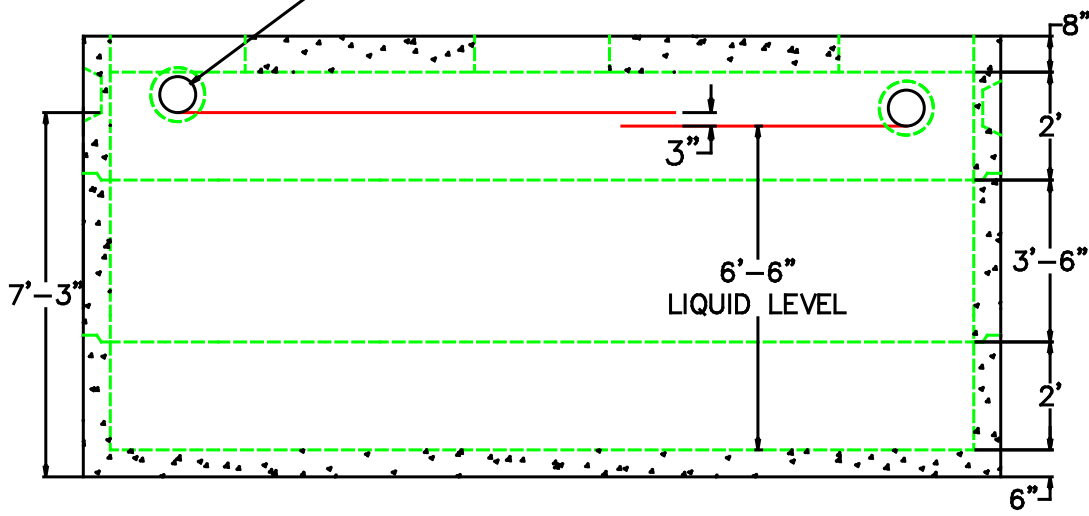


SCITUATE RAY PRECAST
 120 CLAY PIT ROAD
 MARSHFIELD, MA 02050
 PHONE # 1-800-440-0009
 FAX # 781-837-4320

CONTRACTOR:		JOB NAME:	
DATE:	DRAWING: SRP-GT6K	DRAWING BY: C. J.	
6,500 GALLON GREASE TRAP			



KNOCK OUTS FOR 6" OR 8" INLET/OUTLET



NPCA
 Precast ... The Concrete Solution.

- DESIGN NOTES:
1. CONCRETE 5,000 PSI. @ 28 DAYS
 2. HS-20-44 LOADING WITH 12" - 60" OF COVER
 3. REINFORCING ASTM A-615 GRADE 60
 4. CONST. JOINT TO HAVE MIN. 1" BUTYL SEALANT
 5. EXTERIOR BITUMINOUS COATING AS REQUIRED

	FLOOR	VERT. FT	FLAT TOP
WEIGHT	12,500 lbs.	3,800 lbs.	16,500 lbs.
VOLUME		1,070 gal.	

