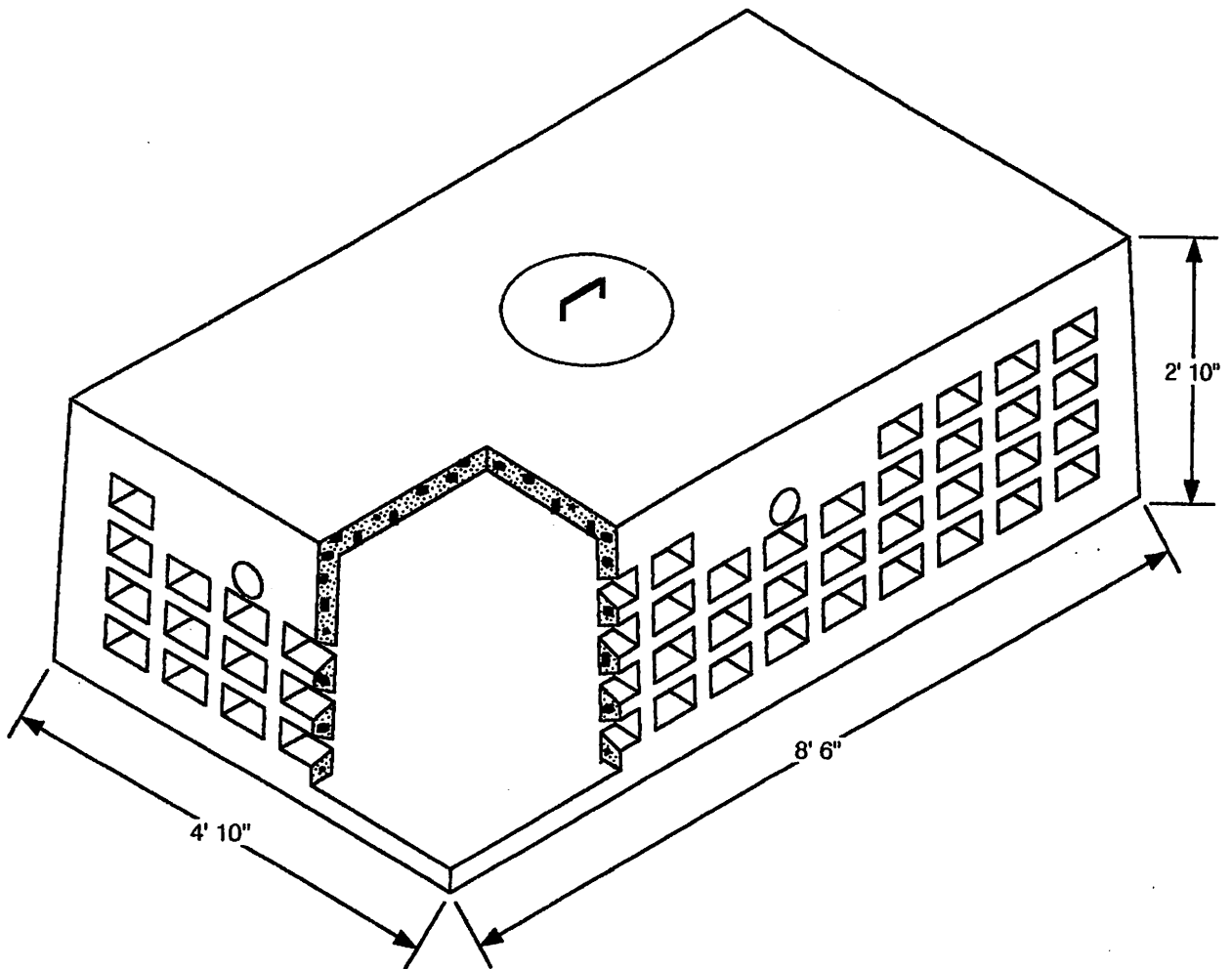


**PEMBROKE**

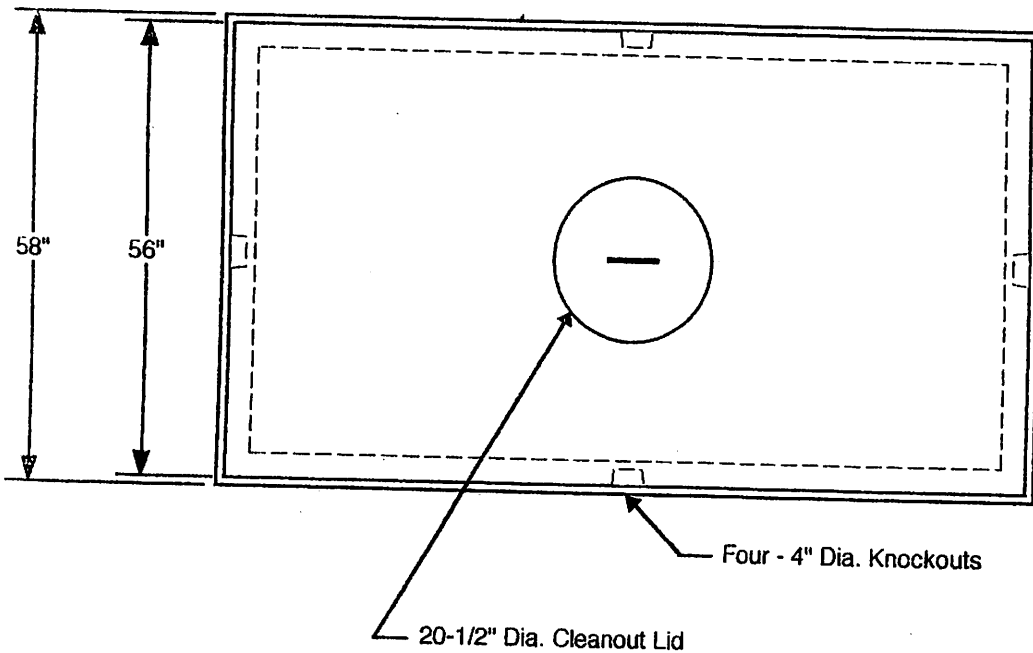
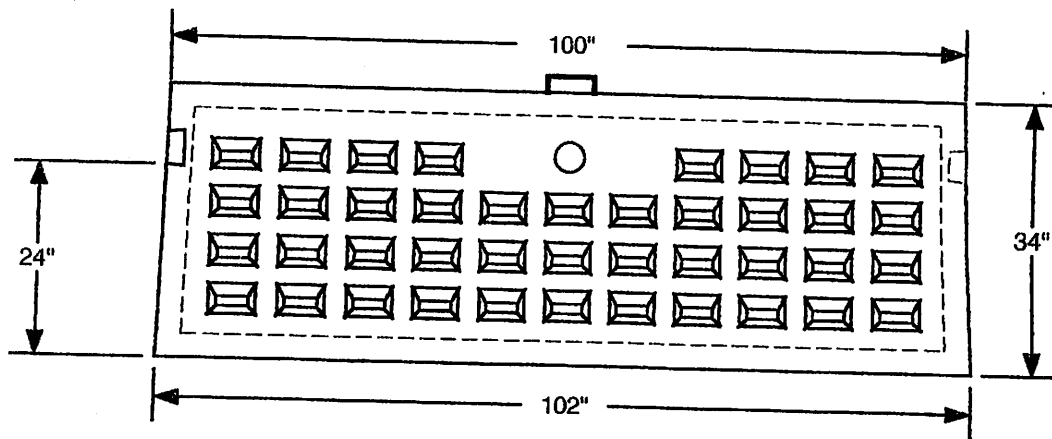
**Concrete Products, Inc.**

793 WASHINGTON STREET  
PEMBROKE, MA 02359  
1-800-698-6463 [MA]  
1-781-826-6463  
1-781-826-7652 (FAX)

**500 GAL LEACHING CHAMBER**



**"ENGINEERING DRAWING ON REVERSE"**



**"SPECIFICATIONS & GENERAL NOTES"**

- [1] Concrete strength f'c 4,000 PSI @ 28 days. Density 150 PCF
- [2] Cement, Portland Type I or III. ASTM C150-81
- [3] Admixtures, air & plasticizers @ ASTM C233-82.
- [4] Reinforcing ASTM A615 for wire fabric, Grade 60 bar.
- [5] Design loading H-10. AASHTO HS20-44 loading Optional.