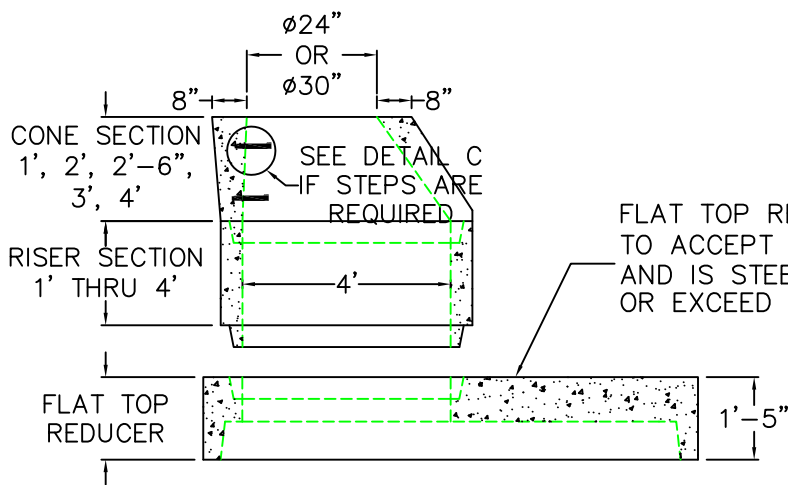
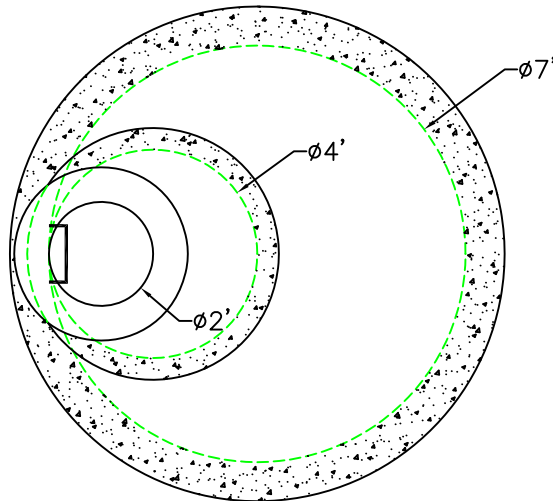
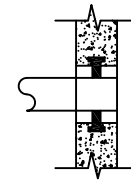


# 7' DIA TRANSITION TO 4' DIA

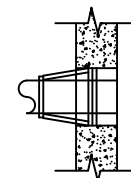


FLAT TOP REDUCER IS GROOVED TO ACCEPT 48" DIA RISER SECTION AND IS STEEL REINFORCED TO MEET OR EXCEED AASHTO HS-20 LOADING

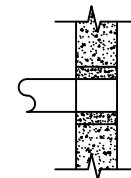
A1  
COMPRESSION GASKET (CAST IN)



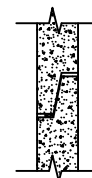
A2  
FLEXIBLE SLEEVE



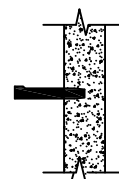
A3  
MORTAR BY CONTRACTOR



B  
BUTYL RUBBER SECTION JOINT



C  
POLYPROPYLENE MANHOLE STEPS



**DESIGN NOTES:**

1. MANUFACTURED TO MEET OR EXCEED: ASTM C-478 & AASHTO M 199 SPECS.
2. CONCRETE = 4,000 PSI. MINIMUM CEMENT PER ASTM C-478 (6.1)
3. REINFORCED STEEL COMFORMS TO LATEST ASTM A 185 SPECIFICATIONS. 0.24 SQ. IN / LINEAL FT. AND 0.24 SQ. IN (BOTH WAYS) BASE BOTTOM
4. STEEL REINFORCEMENT TO MEET OR EXCEED AASHTO HS-20 LOADING
5. MANHOLE STEPS MEET LATEST OSHA REGULATION 29 CFR1910.27, SECTION 16 OF ASTM SPECIFICATION C478 AND SECTION 10 OF ASTM SPECIFICATION C497
6. BUTYL RUBBER JOINT SEALANT PER ASTM C-990 & ASHTO M-198
7. ONE POUR MONOLITHIC BASE



SCITUATE RAY PRECAST  
120 CLAY PIT ROAD  
MARSHFIELD, MA 02050  
PHONE # 1-800-440-0009  
FAX # 781-837-4320

CONTRACTOR:

JOB NAME:

DATE:

DRAWING: SRP-TRANS74

DRAWING BY: C.J. SCOTT